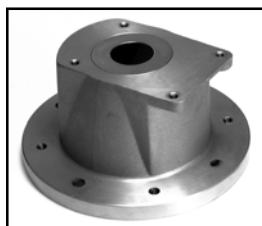
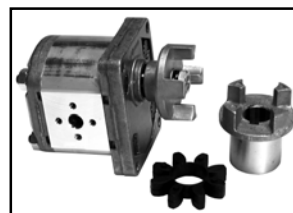


V.grp. 2420 - 2421



KLOKKE FOR SAMMENBYGNING AF EL-MOTOR OG PUMPE



FLEKSIBEL KOBLING MONTERET PÅ TANDHJULSPUMPE

		MOTOR BYGGE- STR. →	71	80	90	100 112	132
PUMPE ↙	STR						
GRP. 0,5	01	KLOKKE	BH161/01	LMC200S05M4S			
	01	KOBLING	HC071/01	AKG04FS05MM			
GRP. 1	02	KLOKKE	LMC160S1004E	LMC200M1004E	LMC201M1004E	LMC250M1004S	
	02	KOBLING	AKG03FS100M	AKG04FS100M	AKG05FS100M	AKG07FS100M	
GRP. 1,5	03	KLOKKE	LMC160S1M04A	LMC200M1M04E	LMC201M1M04E	LMC250M1M04S	
	03	KOBLING	AKG03FSM0M	AKG04FS1M0M	AKG05FS1M0M	AKG07FS1M0M	
GRP. 2	04	KLOKKE		LMC201M2004E	LMC201M2004E	LMC250M2004E	LMC300M2004S
	04	KOBLING		AKG04FS200M	AKG05FS200M	AKG07FS200M	AKG11FS200M
GRP. 3	05	KLOKKE				LMC250M3004E	LMC300M3004E
	05	KOBLING				AKG07FS300M	AKG11FS300M
GRP. 3,5	08	KLOKKE					LMC300M3504E
	08	KOBLING					AKG11FS350M
ATOS PFE31 (SAE-A)	A	KLOKKE		LMC200SW060	LMC200SW060	LMC250AQ060	LMC300AT060
	A	KOBLING		AKGMM01P0066	AKGMM02P0066	AKGMM03P0066	AKGMM04P0066
ATOS PFE41-PFED43-LVP (SAE-B)	B	KLOKKE		LMC200RD070	LMC200RD070	LMC250AQ070	LMC300AX070
	B	KOBLING		AKGMM01P0016	AKGMM02P0016	AKGMM03P0016	AKGMM04P0016
PUMPE ↙	STR	MOTOR BYGGE- STR. →	160	180	200	225	250
GRP. 2	04	KLOKKE	LMC351M2004S	LMC351M2004S			
	04	KOBLING	AKG12FS200M	AKG13FS200M			
GRP. 3	05	KLOKKE	LMC351M3004E	LMC351M3004E			
	05	KOBLING	AKG12FS300M	AKG13FS300M			
GRP. 3,5	08	KLOKKE	LMC351M3504A	LMC351M3504A			
	08	KOBLING	AKG12FS350M	AKG13FS350M			
GRP. 4	11	KLOKKE					
	11	KOBLING					
ATOS PFE31 (SAE-A)	A	KLOKKE	LMC350AU060	LMC350AU060			
	A	KOBLING	AKGMM05P0066	AKGMM06P0066			
ATOS PFED43 (SAE-B)	B	KLOKKE	LMC350AU070	LMC350AU070	LMC400AV070	LMC450AZ070	
	B	KOBLING	AKGMM05P0016	AKGMM06P0016	AKGMM07P0016	AKGMM08P0016	
ATOS PFE51-PFED54 (SAE-C)	C	KLOKKE	LMC350AA080	LMC350AA080	LMC400AA080	LMC450AZ080	AKLM09P0076
	C	KOBLING	AKGMM05P0076	AKGMM06P0076	AKGMM07P0076	AKGMM08P0076	AKGAM09P0076
ATOS PFED54							
ATOS PFE32 (SAE-A)	A	KLOKKE	LMC350AU060	LMC350AU060			
	B	KOBLING	AKGMM05P0016	AKGMM06P0016			
ATOS PFE42 (SAE-B)	B	KLOKKE	LMC350AU070	LMC350AU070	LMC400AV070	LMC450AZ070	
	42	KOBLING	AKGMM05P0076	AKGMM06P0076	AKGMM07P0076	AKGMM08P0076	
ATOS PFE52 (SAE-C)	C	KLOKKE	LMC350AA080	LMC350AA080	LMC400AA080	LMC450AZ080	AKLM09P0076
	52	KOBLING	AKGMM05P0079	AKGMM06P0079	AKGMM07P0079	AKGMM08P0079	AKGAM10P0076

V.grp. 2420 - 2421



GUMMILAMEL FOR FLEKSIBEL KOBLING

	MOTOR EFFEKT KW	MOTOR OMDREJNINGSTAL			
		1000 O/MIN.	1400 O/MIN.	2800 O/MIN.	
A F L Æ S	0,09	63			
	0,12	63	63		
	0,18	71	63	63	
	0,25	71	71	63	
	0,37	80	71	71	
	0,55	80	80	71	
	M O T O R	0,75	90	80	80
		1,10	90	90	80
		1,50	100	90	90
		2,20	112	100	90
3,00		112	100	100	
4,00		132	112	112	
5,50		132	132	132	
B Y G G E S T R.		7,50	160	132	132
		11,00	160	160	160
		15,00	180	160	160
	18,50	200	180	160	
	22,00	200	180	180	
	30,00	225	200	200	
	37,00	250	225	200	
	45,00		225	225	
	55,00		250	250	

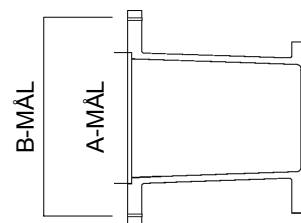
MP LAMEL	MP D-MÅL	MP H-MÅL	FILPRO LAMEL	FILPRO H-MÅL	FILPRO H	HYDR-APP LAMEL	HYDR-APP D-MÅL
EGE0	40	18	ER200*	A55	27	39200300	43
EGE2	65	30	ER300**	A65	30	39200400	63
EGE3	80	38	ER500	A95	46	39200500	86
EGE4	95	46	ER700	A120	60	39200600	110
EGE5	105	51	ER800	A160	80		
EGE6	120	60					

D-mål: Udv. diameter.

H-mål: Indv. diameter.

* Fås også i 98 shore - Best.nr.: AR24/32R

** Fås også i 98 shore - Best.nr.: AR28/38R



Klokker til forbrændingsmotorer

BEST.NR.	FOR PUMPE	A-MÅL	B-MÅL
LMH151	GRP. 1	41,3 MM	92,0 MM
BHE112/082A	SAE-A	41,3 MM	92,0 MM
BHE112C/04	GRP. 2	41,3 MM	92,0 MM
LB252-2	GRP. 2	146,0 MM	127,0 MM
BHE223A-C/05	GRP. 3	146,0 MM	197,0 MM